

Cable Grommets

for Cable Entry Frames of the KEL System



KT small

for routing of pre-terminated cables from 2 to 16 mm in diameter.



KT large

for routing of pre-terminated cables from 16 to 34 mm in diameter.



KTMB

Multi-range grommets for routing of standard cables and conduits from 2.5 to 34 mm in diameter.



KTMB 183

Multi-range grommets for use in KEL 183. For routing of standard cables and conduits from 34 to 75 mm in diameter.



KT-DPF

Highly flexible multi-range grommets for routing of standard cables from 3 to 26 mm in diameter.



DT

Multi-membrane grommets for routing of up to 16 standard cables. Max. cable diameter 12.2 mm.



FT

for routing of flat cables with widths up to 99 mm and thicknesses up to 13 mm.



ST

Plugs for sealing unused KT cable grommets.

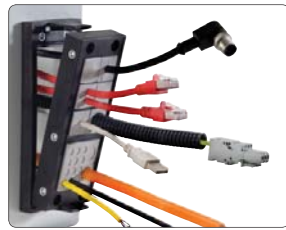


ST-B

Plugs for sealing unused membranes of DT cable grommets.

Accessories

for Cable Entry Frames of the KEL System



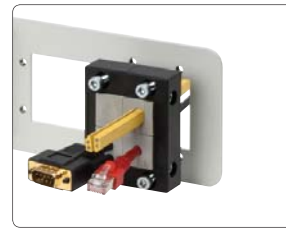
KEL-SNAP

Snap-in mounting frame for quick connect/disconnect of various KEL frame series.



KEL-EMC

Cable collectors for EMC shielding, with or without integrated strain relief. To be mounted on cable entry frames.



FP | MP

Flanged plates for enclosure walls and module plates for enclosure bases for mounting of cable entry frames.



KDR 2 | KDR-ESR

Enclosure base plates for tool-free mounting of KEL cable entry frames.



The KEL System

Cable Entry System for Pre-terminated Cables



innovative ...
... flexible
intelligent ...



For more product information, samples free of charge and the latest icotek catalog visit:

www.icotek.com




icotek Corp.
222 W Ontario St, Ste 450
Chicago, IL 60654

www.icotek.com
info@icotek-usa.com

phone 312-643-2315
fax 312-643-2314

KEL System

Cable Entry System for Pre-terminated Cables



Consistently Split System

Slit cable grommets for pre-terminated cables. Split frames for an individual assembly with cable grommets. Retrofitting and maintenance can be carried out easily and quickly.

Tight Connection

Once inserts are placed into frame compartments, they cannot fall out. Great benefit at initial assembly as well as retrofitting and maintenance.

Warranty on Pre-terminated Cables Remains

No need to cut and re-wire pre-terminated cables. Therefore, cable warranties are unaffected.

anti-corrosive

Also available with V2A screws*

Quick and Easy Mounting

KEL cable entry frames can be easily screwed according to standardized drilling templates. For mounting KEL-U frames the KEL-SNAP mounting frames are an even quicker and also tool-free assembly alternative

Standard Cut-outs and Drilling Templates

Drilling templates and cut-outs according to the standard dimensions for multi-pole connectors (e.g. Harting, Wieland).

High Packing Density, Flexible Assembly

Utilizing grommets that pass two and four cables greatly increases packing density. (Find a cable grommet overview at the backside of the folder).

High Ingress Protection

The high compression pressure of the lid enables a ingress protection of IP54 / NEMA 12. Due to an additionally injected sealing the KEL-ER range provides protection class IP65 / NEMA 4X.

Very Good Strain Relief

Once the lid is affixed to the base frame, the grommets are compressed which enables strain relief for the cables according to EN 50262 / 62444.

up to NEMA 4X

up to IP65

On request also available with threaded bushings**

KEL Extensions for the Highest Packing Density

By using one or two additional middle frames, the KEL Extensions enable the user to route up to 120 pre-terminated cables through one frame.



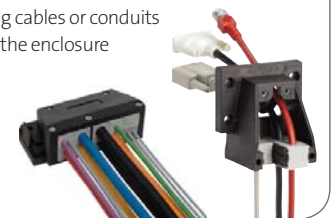
KEL 183 for Large Diameter Supply Cables

The KEL 183 provides a routing solution for pre-terminated cables with diameters up to 34 mm as well as power supply cables with up to 75 mm in diameter.



KEL-FG 90° Angled Flange Enclosure

KEL-FG for routing cables or conduits at a 90° angle to the enclosure or machine wall.

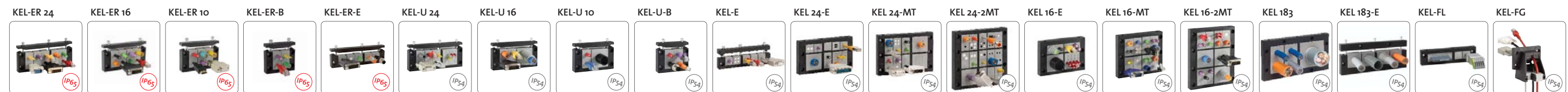


KEL-FL for Flat Cables

The KEL-FL range enables simple, fast and flexible cable routing and sealing of flat wires, e.g. in elevator construction. Additionally round pre-terminated cables can be routed within the same frame as well.



The KEL System Product Range:



*except KEL-FL **except KEL 183